

product '2019



**AMROCK**  
CERAMICA



101 ■



102 ■



103 ■



104 ■



105 ■



175 ■



106 ■



107 ■



108 ■



109 ■



110 ■



173 ■



174 ■



218 ■



219 ■



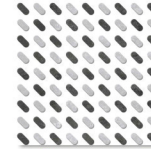
220 ■



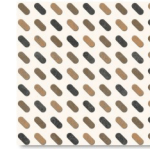
221 ■



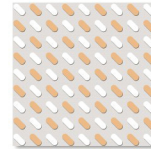
222 ■



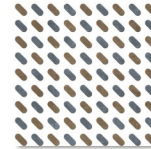
111 ■



112 ■



113 ■



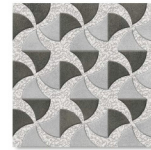
114 ■



115 ■



116 ■



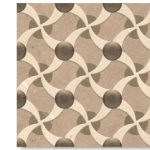
117 ■



118 ■



119 ■



176 ■



214 ■

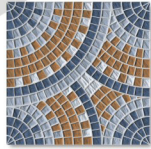


215 ■

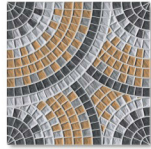




121 ■



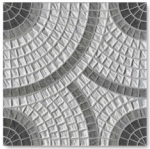
122 ■



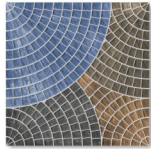
123 ■



124 ■



125 ■



126 ■



127 ■



128 ■



129 ■



130 ■



131 ■



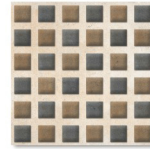
132 ■



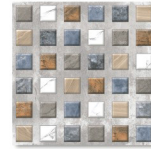
216 ■



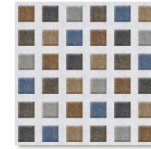
217 ■



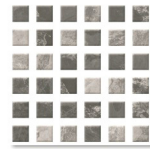
133 ■



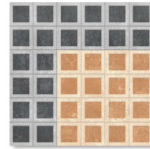
134 ■



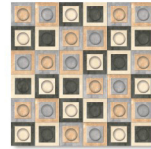
136 ■



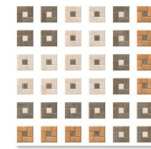
137 ■



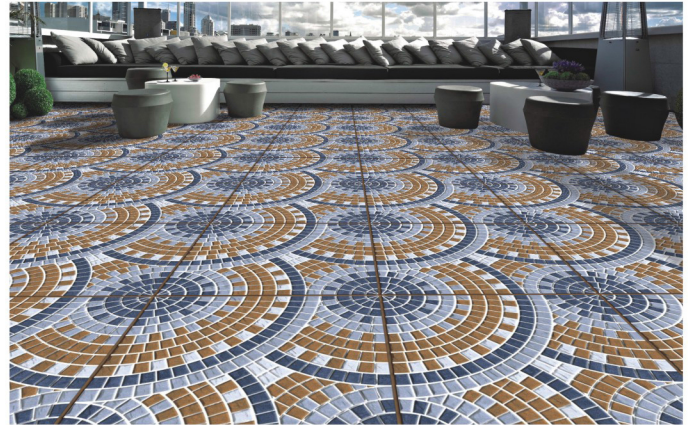
223 ■



224 ■



225 ■





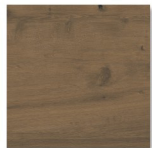
138 ■



138 P ■



139 ■



139 P ■



140 ■



140 P ■



141 ■



141 P ■



164 ■



164 P ■



165 ■



165 P ■



166 ■



166 P ■



167 ■



167 P ■

■ Punch ■ Plane



168 ■



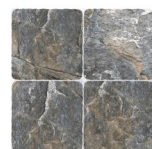
168 P ■



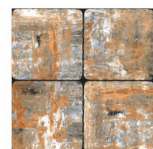
142 ■



143 ■



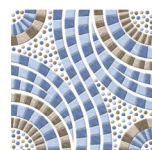
146 ■



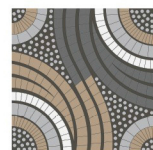
147 ■



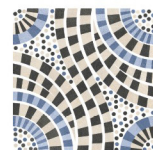
177 ■



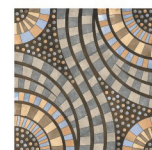
148 ■



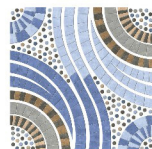
149 ■



150 ■



151 ■



212 ■



213 ■





152 ■



153 ■



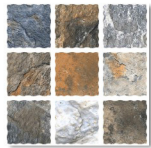
154 ■



155 ■



156 ■



157 ■



178 ■



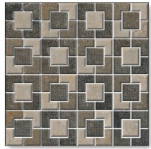
226 ■



227 ■



179 ■



180 ■



181 ■



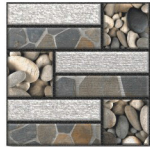
182 ■



183 ■



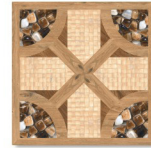
184 ■



185 ■



186 ■



187 P ■



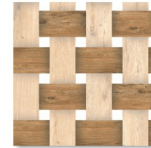
188 P ■



189 P ■



190 P ■



191 P ■



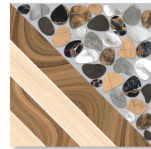
192 P ■



193 P ■



194 P ■



195 P ■



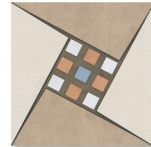
196 P ■



197 P ■



198 P ■



228 P ■



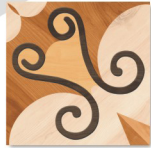
229 P ■



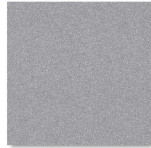
230 P ■



231 P ■



232 P ■



208 D ■



208 L ■



209 D ■



209 L ■



210 D ■



210 L ■



211 D ■



211 L ■



201 ■



202 ■



203 ■



204 ■



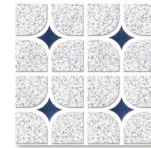
205 ■



206 ■



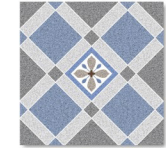
207 ■



ANTI-1003 ■



ANTI-1005 ■



ANTI-1006 ■



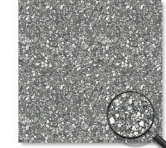
ANTI-1007 ■



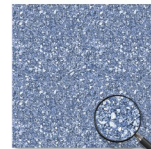
ANTI-1010 ■



ANTI-301 ■



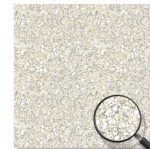
ANTI-302 ■



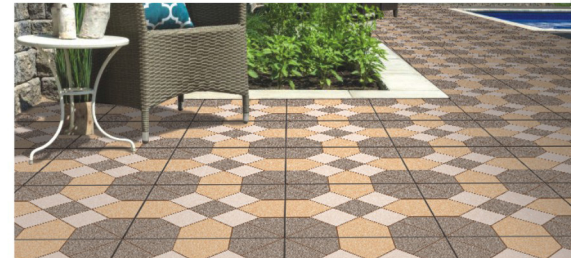
ANTI-303 ■



ANTI-304 ■



ANTI-305 ■





233 D ■



233 L ■



234 D ■



234 L ■



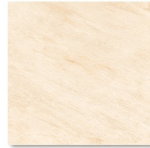
235 D ■



235 L ■



236 ■



237 ■



238 ■



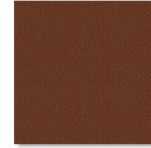
239 ■



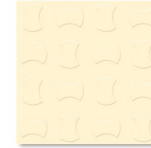
240 ■



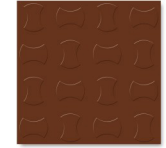
Anti Ive



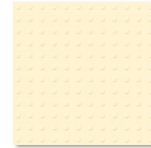
Anti Tera



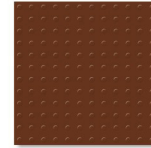
Block Ive



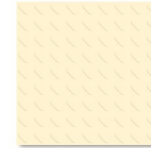
Block Tera



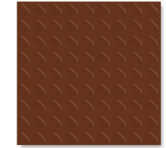
Buttons Ive



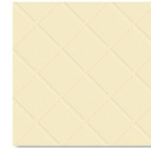
Buttons Tera



Capsule Ive



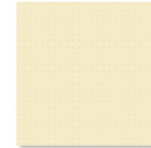
Capsule Tera



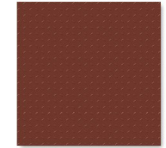
Carpet Ive



Carpet Tera



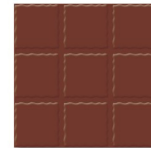
Checkered Ive



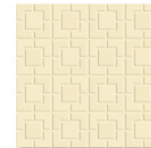
Checkered Tera



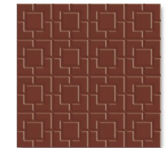
Cubix Ive



Cubix Tera



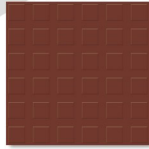
Double Square Ive



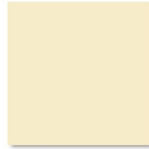
Double Square Tera



Four Square Ive



Four Square Tera



Plane Ive



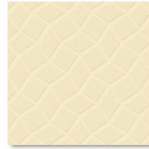
Plane Tera



Revlon Ive



Revlon Tera



Star Beige Ive



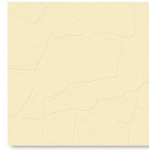
Star Beige Tera



Step Ive



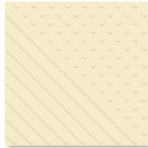
Step Tera



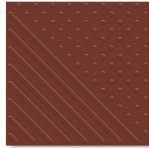
Stone Ive



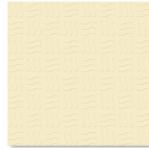
Stone Tera



Tab Buttons Ive



Tab Buttons Tera



Wavy Ive



Wavy Tera



## TECHNICAL SPECIFICATION

PARTICULARS	STANDARD AS PER ISO 13006/EN 176 GROUP BLA	MATRIX VALUE	METHOD OF TESTING
Deviation in length	± 0.6%	0.10%	EN 98
Deviation in Thickness	± 5.0%	0.10%	EN 98
Straightness of Side [Right angle]	± 0.5%	0.10%	EN 98
Rectangularity	± 0.6%	0.20%	EN 98
Surface Flatness	± 0.5%	0.20%	EN 98
Water Absorption	<0.5%	0.50%	EN 99
Mohs Hardness of surface	>6.0%	8	EN 101
Flexural Strength	>27N/mm <sup>2</sup>	48N/mm <sup>2</sup>	EN 100
Abrasion resistance	<204 mm <sup>3</sup>	>143mm <sup>3</sup>	EN 102
Skid resistance[Friction co-efficient]	>0.4	>0.6	ASTMC - 1028
Breaking Strength	1113N	2880N	ASTMC - 648
density(g/cc)	>2	2.4	DIN 51082
Chemical resistance	No Damage	No Damage	EN 106
Thermal Shock resistance	No Damage	No Damage	EN 104
Colour resistance	No Damage	No Damage	DIN 51094
Thermal expansion	< 9 x 10 <sup>-6</sup>	<6 x 10 <sup>-6</sup>	EN 103
Stain resistance	Resistance	Resistance	ISO 10545 - 14
Moisture expansion	Nil	Nil	ISO 10545 - 10
Glossiness	-	Min 65% reflection	Glossmeter
Wedging	-	± 1.0%	-

PRODUCT	SIZE	COVERAGE AREA APROX	WEIGHT
DIGITAL	300 X 300 MM	0.72 SQ.MTR.	14 KG.(APPROX.)
NORMAL	300 X 300MM	0.90 SQ.MTR.	17 KG (APPROX.)

**Note:**

Colours shown are as accurate as the limitations of the printing process will allow. prospective customers are advised to inspect a sample of the tile before ordering every effort has been made to ensure the accuracy of the information given. However the company reserves the right to change the specifications without prior notice.